



Wall Access Panel



Fire Rated Access Panel

Product Reference: TIS RCD2H

Technical Specification

Technical Specification	
DESCRIPTION	Metal Door with Exposed Edge Frame and 20mm recessed for tile/marble/stone infill, 2mm mesh in place- TIS RCD2H
FIRE RATED	3 hours Fire Resistance for integrity, all in accordance with BS EN 1634-1: 2014 + A1: 2018 & BS EN 1363-1: 2012
HINGED TYPE	Panel / Cupboard Hinge
COMPOSITION	2.0mm Zinc Plated Steel Frame and Door. 20mm Recessed Door with 2mm mesh in place. Polyester Powder Coated to RAL 9010 20% gloss.
FRAME	Exposed Edge Frame
FITTING	Screw/bolt-fixed into position through the side of the panel frame
LOCKING	3-way locking
SEAL	10*4.5mm all around the frame, NORSEAL FS1000 (Fire, Smoke & Acoustic Characteristic for seal but tested for Fire)

TIS RCD2H Access Panel is designed to fit into any type of wall system allowing easy access into cavity/void. The panel to be inserted directly into the clear structural opening and screw/bolt-fixed in position through the side of the panel frame.

Features:

- 3 hours Fire Rated
- Exposed Edge Frame
- Recessed 20mm for Tile/Marble/Stone infill
- 2mm mesh in place
- Three-way locking
- Powder Coated to RAL 9010 as Standard

Fire:

- 3 hours Fire Rated for a Wall System
- All in accordance with BS EN 1634-1: 2014 + A1: 2018 & BS EN 1363-1: 2012
- Intumescent strips fitted on the frames (DO NOT interfere with the seals)
- Approved by Abu Dhabi Civil Defense
- Approved by Dubai Civil Defense
- Approved by Qatar Civil Defense

Dimensions:

- Please note that on installation of the access panel, the actual size of the structural opening in the wall needs to be 10mm larger than the overall panel



TISolutionz
Access Panel & Access Hatch

TOTAL INTERIOR SOLUTIONS TIS

P.O.BOX: 29618, Hamdan Street

Abu Dhabi, United Arab Emirates

☎ +971 2 633 3448

☎ +971 2 631 1156

✉ sales@tisolutionz.com

TOTAL INTERIOR SOLUTIONS WLL

P.O.Box: 30007, Jabr Bin Mohd. Street

Doha, Qatar

☎ +974 333 83847

☎ +971 2 631 1156

✉ sales@tisolutionz.com

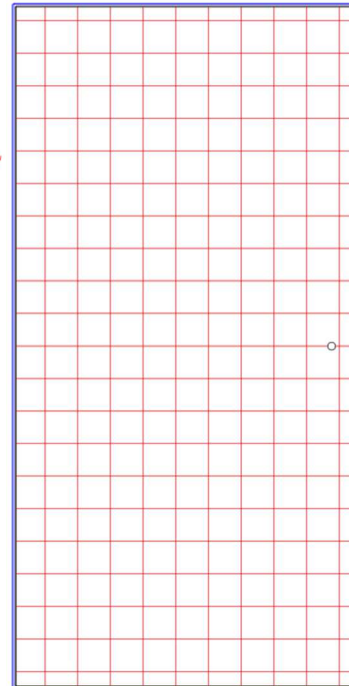
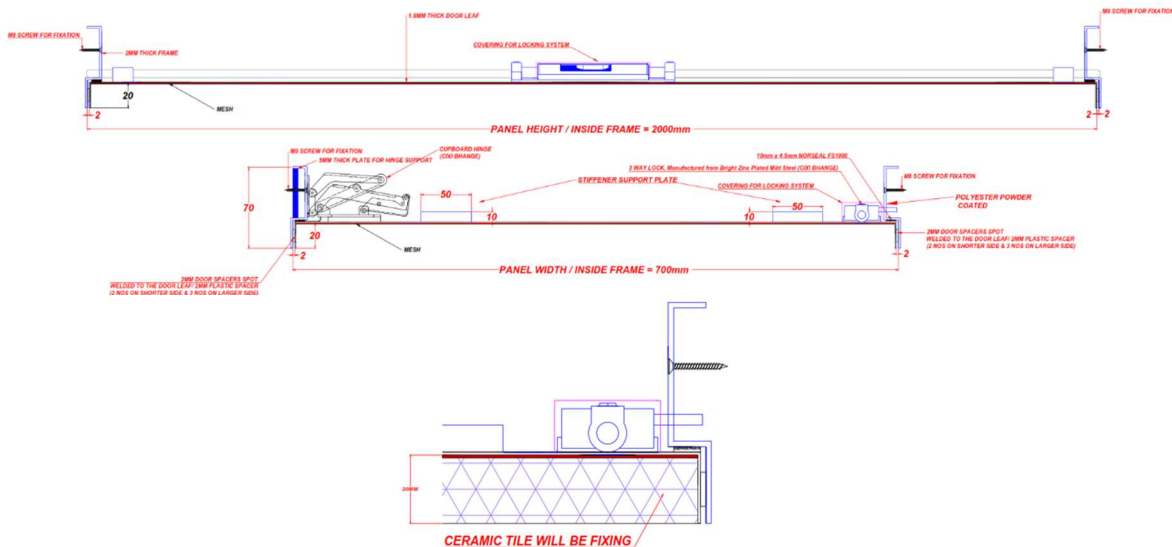


Wall Access Panel

General Drawing

Fire Rated Access Panel

Product Reference: TIS RCD2H



TISolutions
Access Panel & Access Hatch

TOTAL INTERIOR SOLUTIONS TIS
P.O.BOX: 29618, Hamdan Street
Abu Dhabi, United Arab Emirates

☎ +971 2 633 3448
☎ +971 2 631 1156
✉ sales@tisolutionz.com

TOTAL INTERIOR SOLUTIONS WLL
P.O.Box: 30007, Jabr Bin Mohd. Street
Doha, Qatar

☎ +974 333 83847
☎ +971 2 631 1156
✉ sales@tisolutionz.com