



Wall Access Panel

Fire Rated Access Panel

Product Reference: TIS MD SC L RW 2H

Technical Specification	
DESCRIPTION	Metal Door with Picture Frame and 50mm Rockwool infill – TIS MD SC L RW 2H
FIRE RATED	2 hours Fire Resistance for integrity, all in accordance with BS EN 1634-1: 2014/A1:2018
HINGED TYPE	Continuous Hinge
COMPOSITION	1.5mm Zinc Plated Steel Frame and Door. 50mm Rockwool with density 140kg/m ³ Infill to Door. Spring closer. Polyester Powder Coated to RAL 9010 20% gloss.
FRAME	25mm Picture Frame
FITTING	Screw/bolt-fixed into position through the side of the panel frame
LOCKING	3-way locking with slam
SEAL	10*4.5mm all around the frame, NORSEAL FS1000 (Fire, Smoke & Acoustic Characteristic for seal but tested for Fire)

TIS MD SC L RW 2H Access Panel is designed to fit into any type of wall system allowing easy access into cavity/void. The panel to be inserted directly into the clear structural opening and screw/bolt-fixed into position through the side of the panel frame.

Features:

- 2 hours Fire Rated
- 25mm wide Picture Frame
- 50mm Rockwool infill
- Spring Closer
- Three-way slam locking
- Powder Coated to RAL 9010 as Standard

Fire:

- 2 hours Fire Rated for a Wall System
- All in accordance with BS EN 1634-1: 2014/A1:2018
- Intumescent strips fitted on the frames (DO NOT interfere with the seals)
- Approved by Abu Dhabi Civil Defense
- Approved by Dubai Civil Defense
- Approved by Qatar Civil Defense

Dimensions:

- Please note that on installation of the access panel, the actual size of the structural opening in the wall needs to be 10mm larger than the overall panel



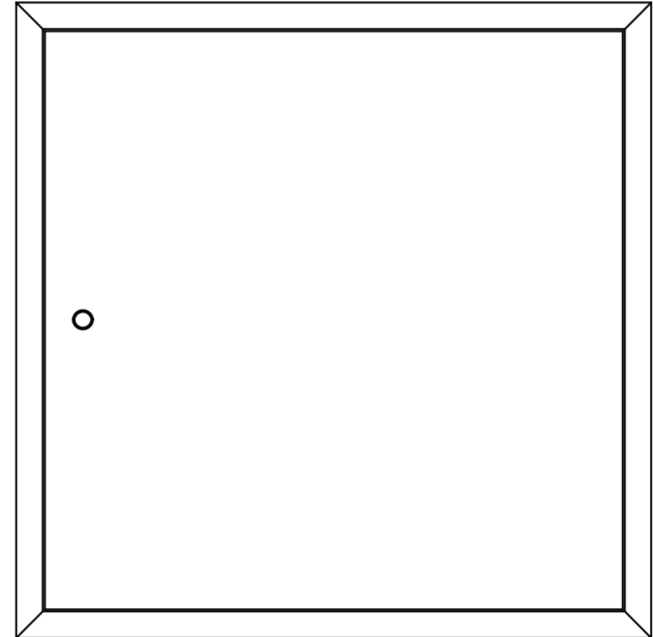
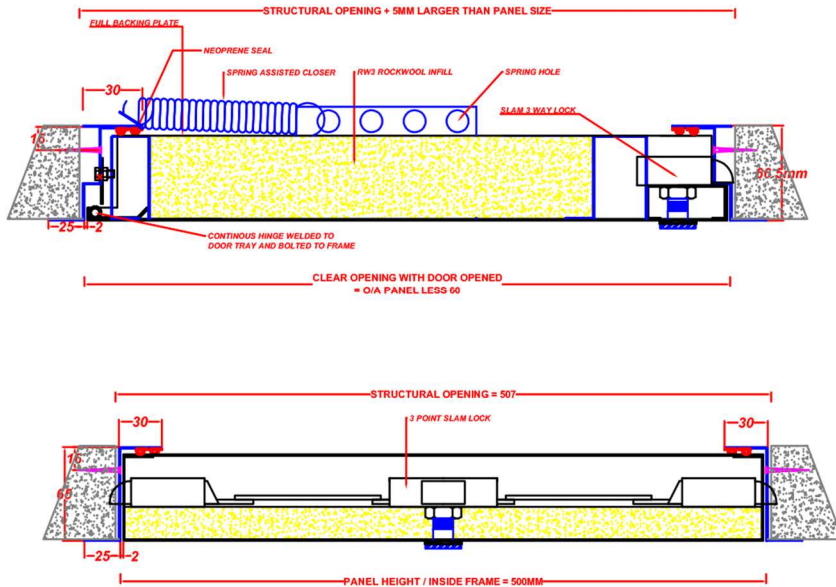


Wall Access Panel

General Drawing

Fire Rated Access Panel

Product Reference: TIS MD SC L RW 2H



TISolutionz
Access Panel & Access Hatch

TOTAL INTERIOR SOLUTIONS TIS
P.O.BOX: 29618, Hamdan Street
Abu Dhabi, United Arab Emirates

☎ +971 2 633 3448
☎ +971 2 631 1156
✉ sales@tisolutionz.com

TOTAL INTERIOR SOLUTIONS WLL
P.O.Box: 30007, Jabr Bin Mohd. Street
Doha, Qatar

☎ +974 333 83847
☎ +971 2 631 1156
✉ sales@tisolutionz.com